

Instructions for GO TO Speed Control

The speed of automatic slewing can be chosen between the high speed and the middle speed. If the middle speed is selected, the slewing speed will be reduced to half of the maximum speed. The motor noise at the GO TO slewing will be alleviated accordingly. It does not link to the maximum speed in the SCOPE MODE.

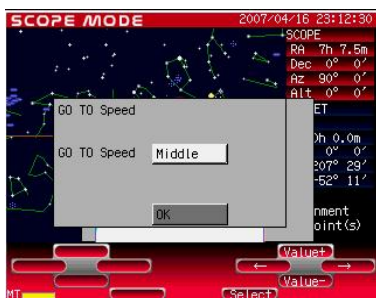
(It reduces the maximum GO TO speed only and does not link with any motion using the directional keys.)

Procedures

- ① Press **Menu** to display the System Menu. Move the cursor to **GO TO Speed** with the **↑** · **↓** keys and press **Select** to enter.



- ② The default setting is the high speed. To change the speed to the middle speed, choose **Middle** with the **↑** · **↓** keys. Then choose **OK** and press **Select** to enter.



(Save the setting, or the setting will be no effect when STAR BOOK Type-S is rebooted.)

Completion